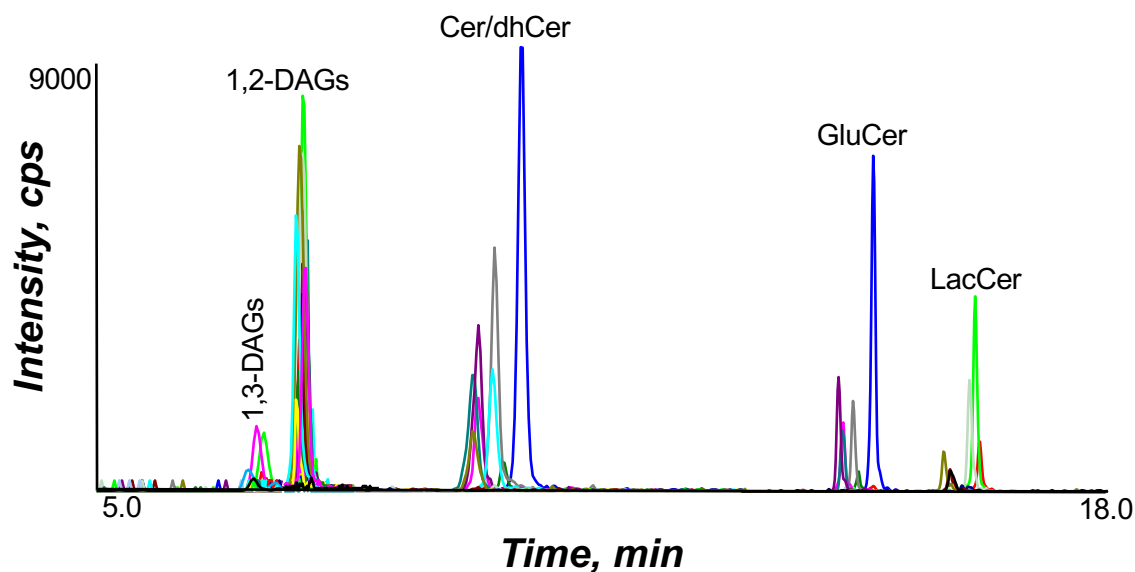
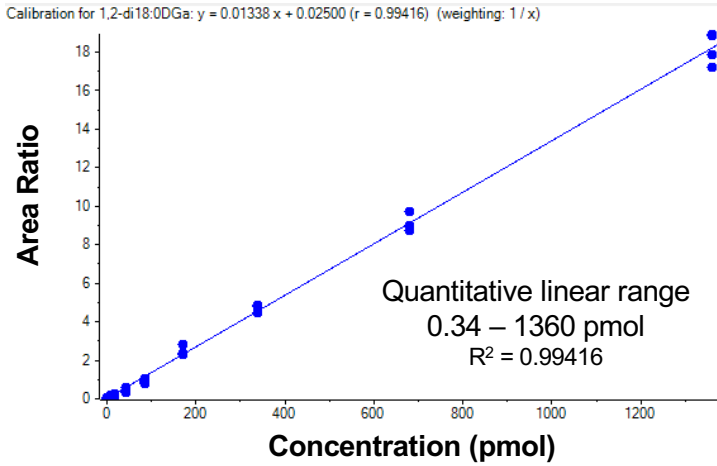


DAGs/Ceramides/Glycosphingolipids

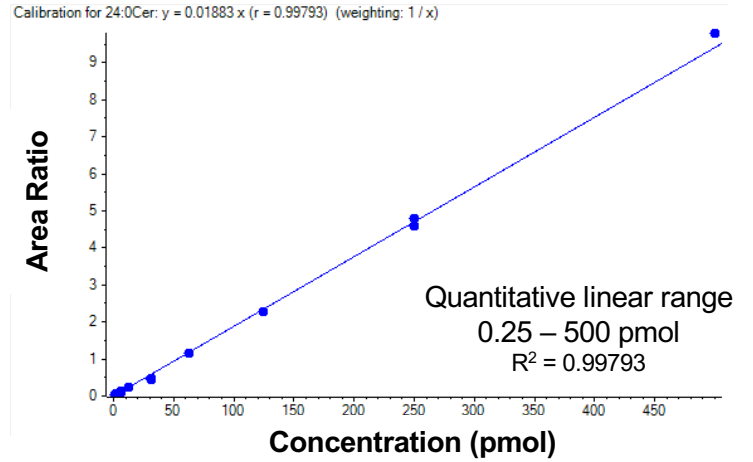


Diacylglycerols isomers (1,3- vs 1,2-)	Ceramides	Glucosylceramides
14:0/14:0-DAG	14:0-Cer	14:0-GluCer
14:0/16:1-DAG	16:0-Cer	16:0-GluCer
12:0/18:0-DAG	18:0-Cer	18:0-GluCer
14:0/16:0-DAG	20:0-Cer	20:0-GluCer
16:1/16:1-DAG	22:0-Cer	22:0-GluCer
14:0/18:1-DAG	23:0-Cer	23:0-GluCer
16:0/16:1-DAG	24:0-Cer	24:0-GluCer
14:0/18:0-DAG	24:1-Cer	24:1-GluCer
16:0/16:0-DAG	26:0-Cer	26:0-GluCer
16:0/18:2-DAG	26:1-Cer	26:1-GluCer
16:1/18:1-DAG	Dihydroceramides	Galactosylceramides
16:0/18:1-DAG	14:0-dhCer	14:0-GalCer
18:0/16:1-DAG	16:0-dhCer	16:0-GalCer
16:0/18:0-DAG	18:0-dhCer	18:0-GalCer
16:0/20:4-DAG	20:0-dhCer	20:0-GalCer
18:2/18:2-DAG	22:0-dhCer	22:0-GalCer
16:0/20:3-DAG	23:0-dhCer	23:0-GalCer
18:0/18:3-DAG	24:0-dhCer	24:0-GalCer
18:2/18:1-DAG	24:1-dhCer	24:1-GalCer
16:0/20:2-DAG	26:0-dhCer	26:0-GalCer
18:0/18:2-DAG	26:1-dhCer	26:1-GalCer
18:1/18:1-DAG	Lactosylceramides	
16:0/20:1-DAG	14:0-LacCer	
18:0/18:1-DAG	16:0-LacCer	
16:0/20:0-DAG	18:0-LacCer	
18:0/18:0-DAG	20:0-LacCer	
16:0/22:6-DAG	22:0-LacCer	
18:0/20:4-DAG	23:0-LacCer	
18:0/22:6-DAG	24:0-LacCer	
	24:1-LacCer	
	26:0-LacCer	
	26:1-LacCer	

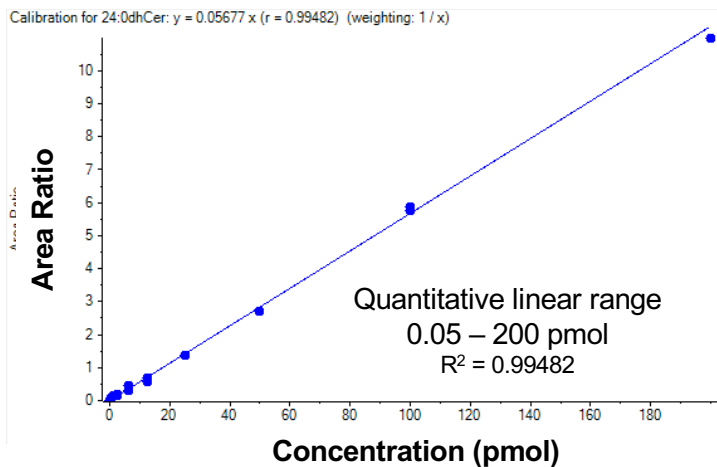
Representative DAG standard curve



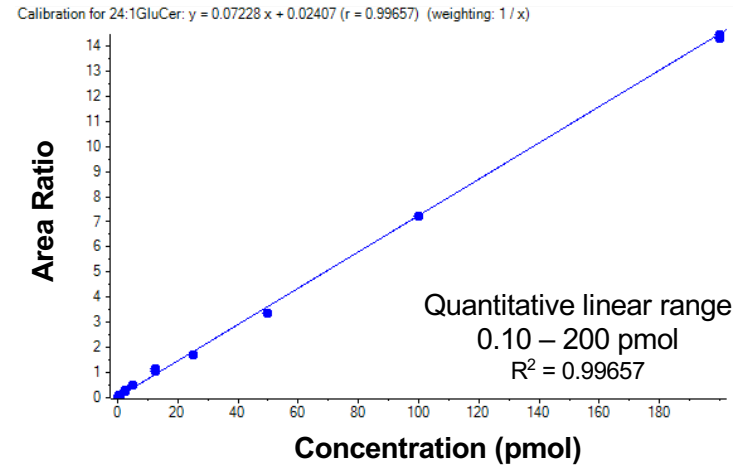
Representative Cer standard curve



Representative dhCer standard curve



Representative GluCer standard curve



Representative LacCer standard curve

