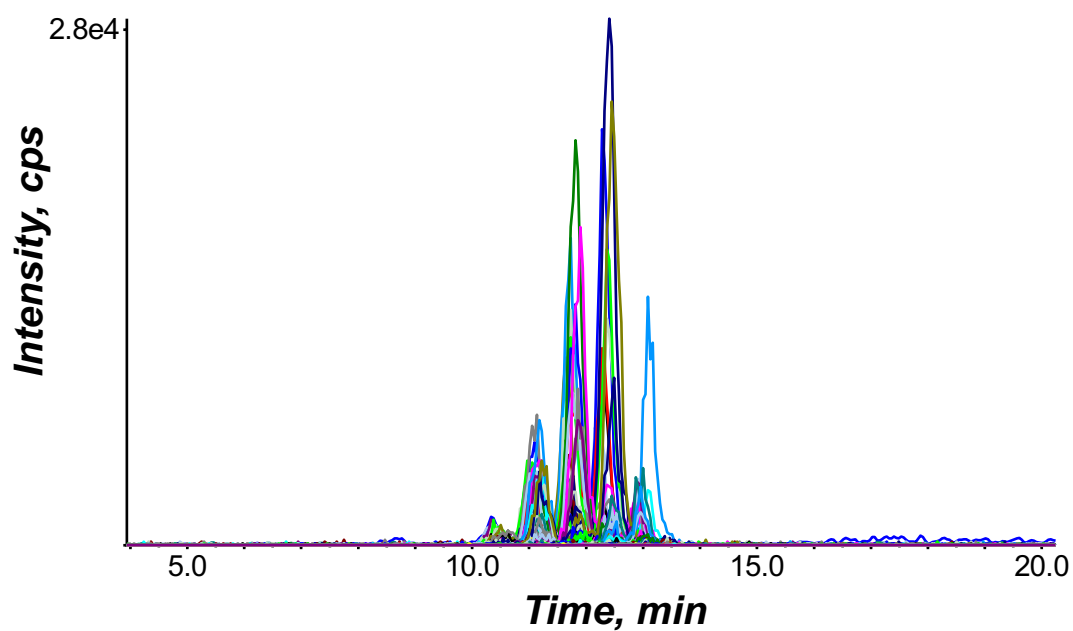


# TAGs



Triacylglycerols	
48:0-TAG	54:6-TAG
48:1-TAG	54:5-TAG
48:2-TAG	54:4-TAG
48:3-TAG	54:3-TAG
50:4-TAG	54:2-TAG
50:3-TAG	54:1-TAG
50:2-TAG	54:0-TAG
50:1-TAG	56:7-TAG
50:0-TAG	56:6-TAG
52:6-TAG	56:5-TAG
52:5-TAG	56:4-TAG
52:4-TAG	56:3-TAG
52:3-TAG	56:2-TAG
52:2-TAG	56:1-TAG
52:1-TAG	56:0-TAG
52:0-TAG	

## Representative TAG standard curve

Calibration for 50:1:  $y = 4.45482e-4 x + 0.02152$  ( $r = 0.99496$ ) (weighting:  $1 / x$ )

