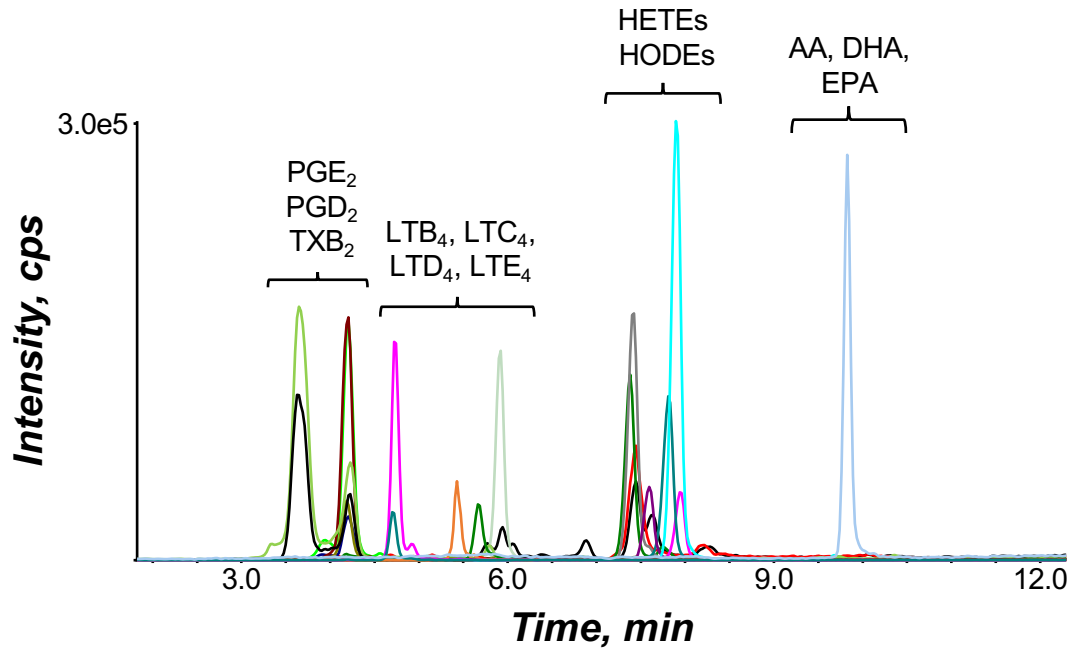


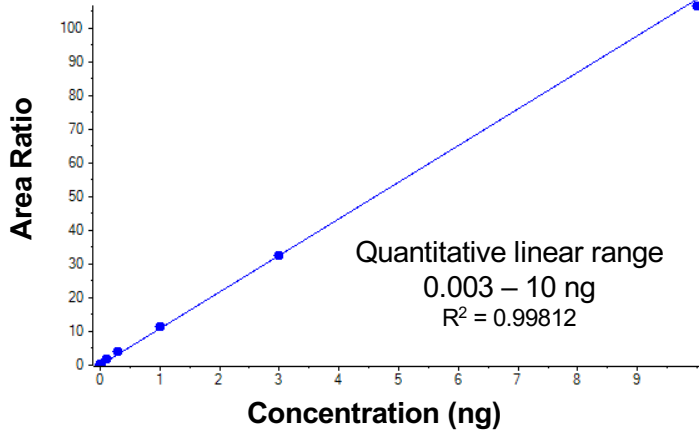
# Eicosanoids



Eicosanoids	
LTB <sub>4</sub>	5-HETE
6-trans-LTB <sub>4</sub>	12-HETE
20-OH-LTB <sub>4</sub>	15-HETE
20-COOH-LTB <sub>4</sub>	20-HETE
LTC <sub>4</sub>	9-HODE
LTD <sub>4</sub>	11-HODE
LTE <sub>4</sub>	PGA <sub>2</sub> /J <sub>2</sub>
AA	PGD <sub>2</sub>
EPA	PGE <sub>2</sub>
DHA	TXB <sub>2</sub>
	6-keto-PGF1alpha

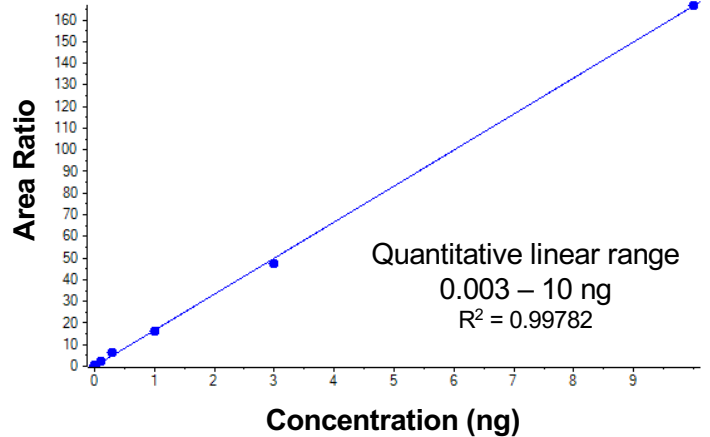
### TXB<sub>2</sub> standard curve

Calibration for TXB2:  $y = 10.86584x$  ( $r = 0.99812$ ) (weighting:  $1/x$ )



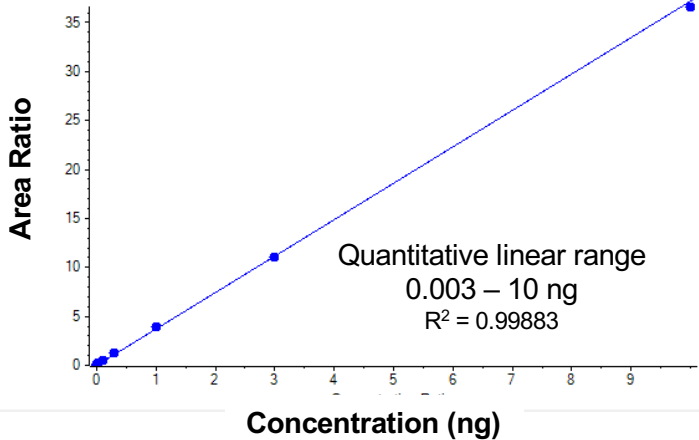
### PGE<sub>2</sub> standard curve

Calibration for PGE2:  $y = 16.65045x$  ( $r = 0.99782$ ) (weighting:  $1/x$ )



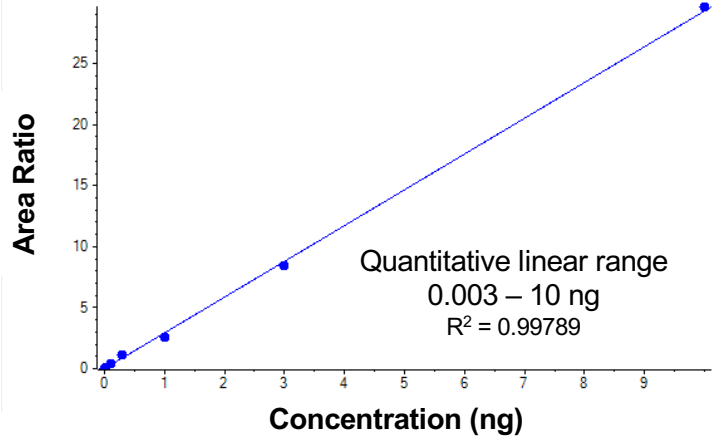
### 6-keto-PGF<sub>1α</sub> standard curve

Calibration for 6kPGF1alpha:  $y = 3.71906x$  ( $r = 0.99883$ ) (weighting:  $1/x$ )



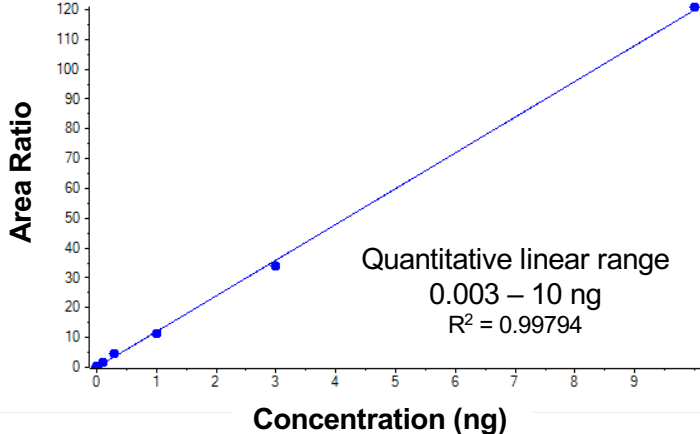
### LTC<sub>4</sub> standard curve

Calibration for LTC4:  $y = 2.93167x$  ( $r = 0.99789$ ) (weighting:  $1/x$ )



### LTB<sub>4</sub> standard curve

Calibration for LTB4:  $y = 11.99307x$  ( $r = 0.99794$ ) (weighting:  $1/x$ )



### 5HETE standard curve

Calibration for 5HETE:  $y = 26.14955x$  ( $r = 0.99699$ ) (weighting:  $1/x$ )

